



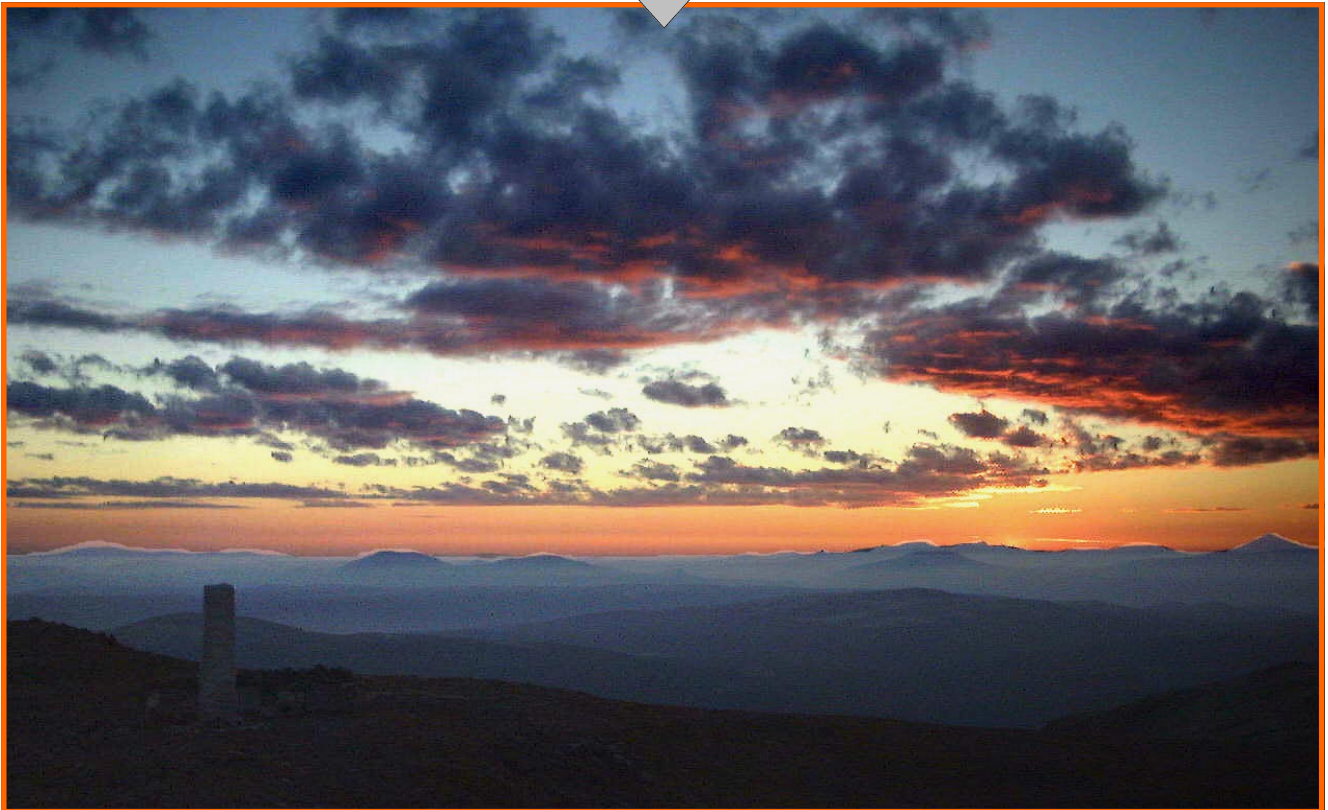
# The Mt. Tron Mail

September 2002

Mt. Tron University of Peace Foundation

No. 3, Volume 5

## Dawn on the Peace Plateau



*Dawn on the "Peace Plateau", Mt. Tron in Alvdal, at about 06.30 hours on the 12.09.02. View towards East. Down to the left in the picture, the bauta, which is a memorial over Ananda Acharya and the first stone to the University of Peace, is dimly seen. Photo: Jan Aage Røtnes.*

### **The Peace Plateau on Mt. Tron, on the day after the anniversary!**

As a peace loving Norwegian, resident partly in the USA, and therefore close to both 11th September last year and all the after effects, I experienced the sunrise and the meditation on the Peace Plateau on the 12th September as moving.

After having travelled to Trondheim in Norway with my old mother, driven through my family's own districts at Røros and met good friends at Alvdal, a few hours in seclusion and reflection on the Peace Plateau was a logical ingredient for the travel, as it is for all my travels in those regions.

And with the message from America that 11th September had passed in dignity and peace, and that my beloved ones there were safe, the silence, the beauty and the tranquillity

on the Peace Plateau were a stronger experience than usual. And I felt Ananda Acharya's presence and understood so much better why he chose exactly this place for his meditation.

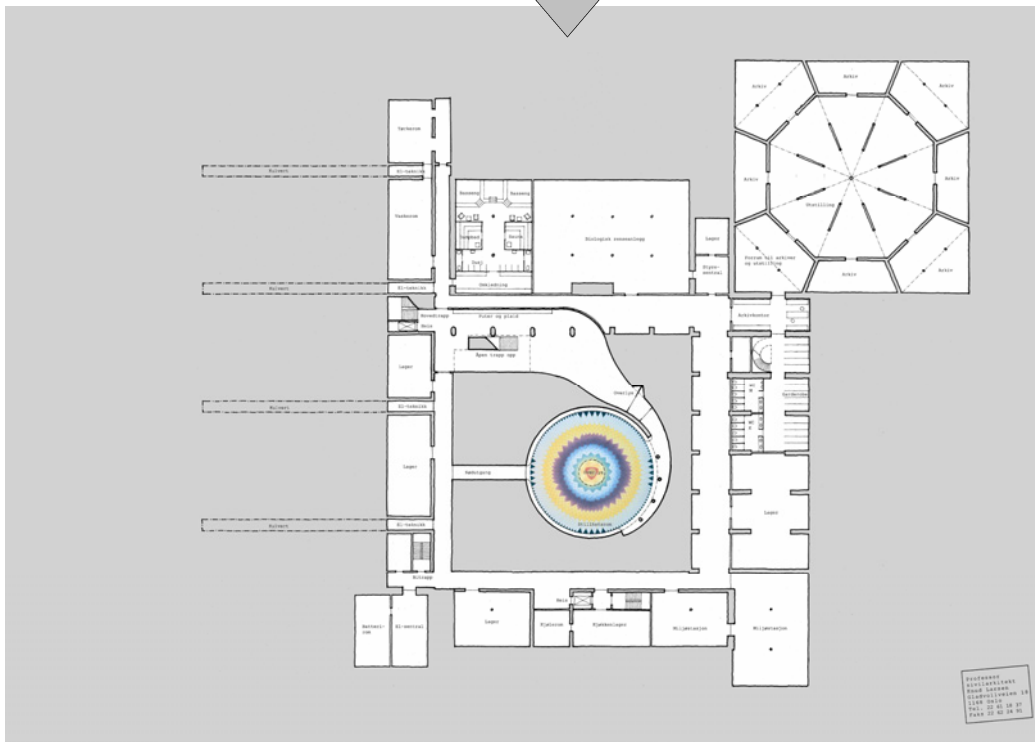
I and my life partner in America work actively for peace, tolerance and creative development for all. After being introduced to the University of Peace a couple of years ago, it has grown stronger and stronger in my consciousness, and I now know that it has to be realized. She and I, and all our friends here in California, share this view, and we know that the world needs it.

Let us all contribute to realize this important work.  
In the name of peace!

Los Angeles, California

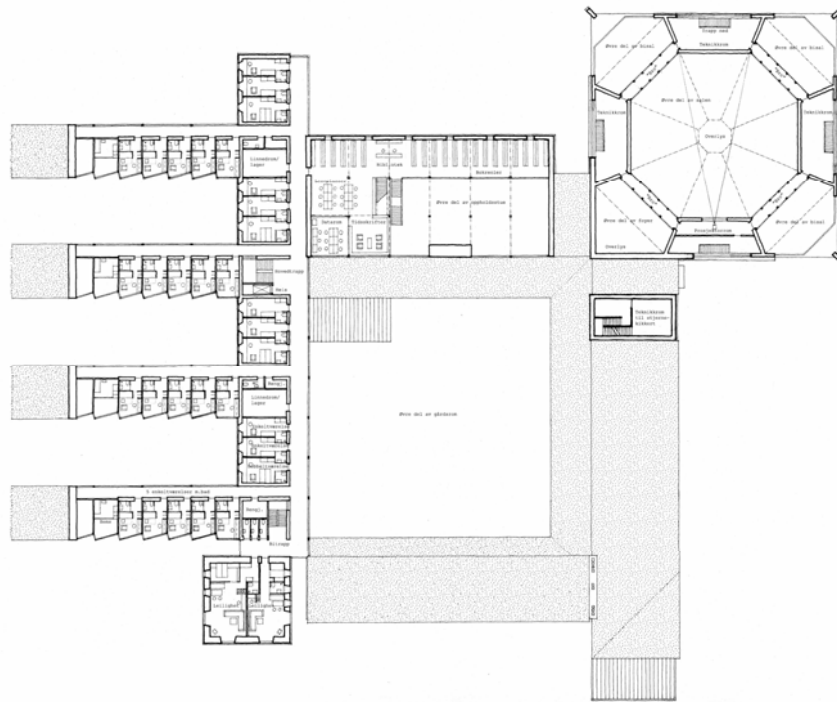
*Jan Aage Røtnes*

## (5) New drawings and a new model to...



TRONFJELL FREDSUVERSITET . FORPROSJEKT . PLAN KJELLER . MÅLSTOKK 1:400 . 20.02.2002

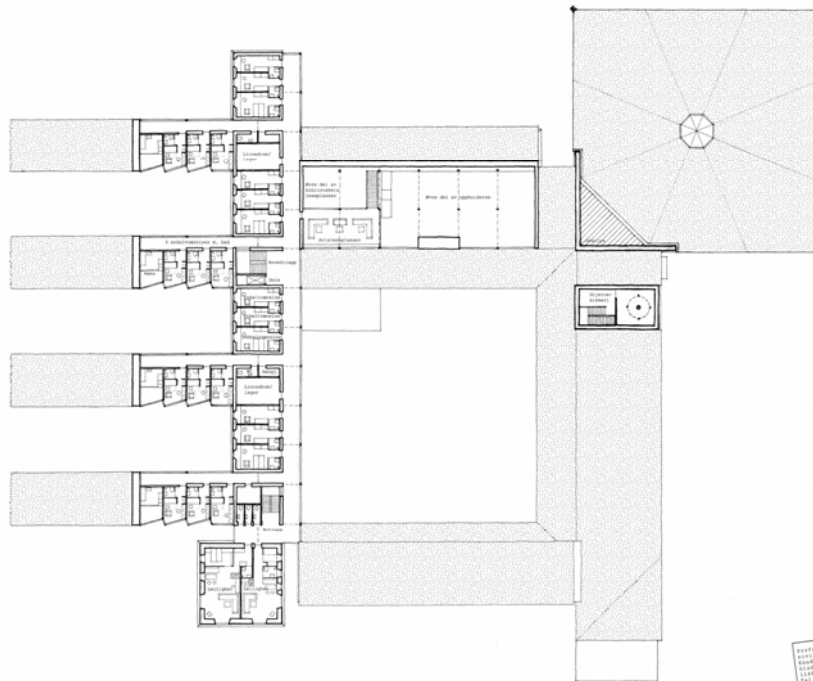
**Plan basement:** Below the big conference hall in the NE, are archives and exhibition rooms, while below the dining hall in the E, there are wardrobes, WC and store rooms. Below the living room in the N, are baths, sauna, and a biological cleaning installation. Beneath the open courtyard in the middle of the construction, is a 'hall of silence' or meditation room. **Pre-project 20.02.2002. Knud Larsen.**



TRONFJELL FREDSUVERSITET . FORPROSJEKT . PLAN 2. ETASJE . MÅLSTOKK 1:400 . 20.02.2002

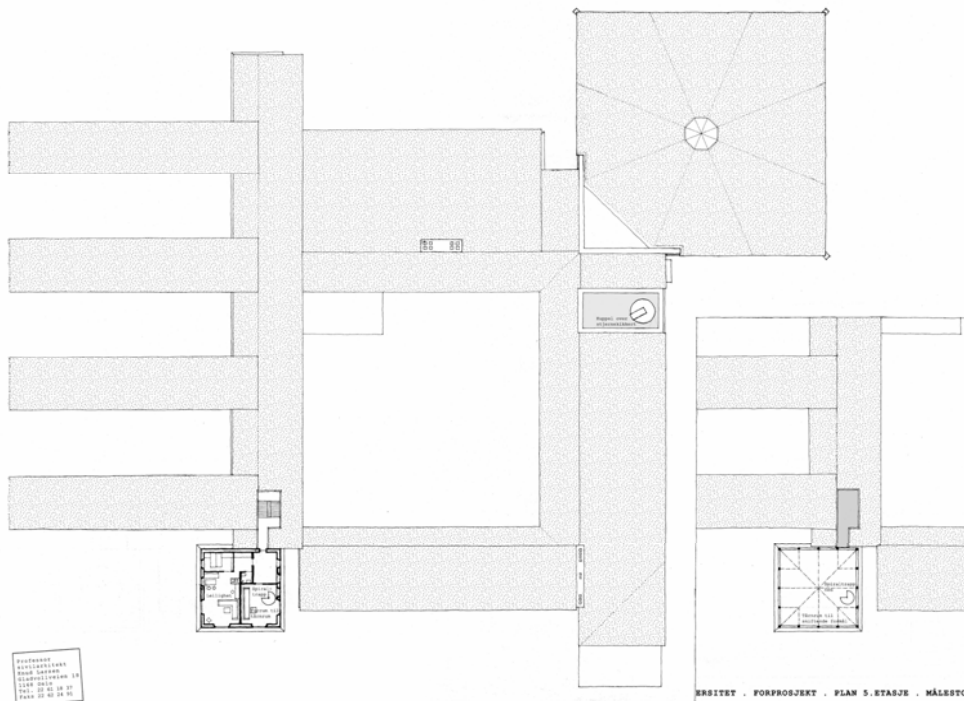
**Plan 1st floor:** In the conference hall in the NE, are stairways and 'the gallery', which goes round the entire hall, and also technical rooms. Above the living room in the N, are a library, a reading room and a data room. The whole of the West Wing has single- and double rooms, while the Tower has two apartments. The kitchen and dining hall in the S and E, with only one floor, here have roofs. **Pre-project 20.02.2002. Knud Larsen.**

# The Mt.Tron University of Peace



TRONFJELL FREDSUINIVERSITET . FORPROSJEKT . PLAN 3. ETASJE . MÅLSTOKK 1:400 . 20.02.2002

**Plan 2nd floor:** Here the conference hall in the NE has a roof, while a special reading- and restroom is constructed as a loft room uppermost above the living room and the library in the N. The whole of the West Wing and the Tower have also on this floor bedrooms and living compartments. Above the entrance in the E, a small star observatory is placed. **Pre-project 20.02.2002. Knud Larsen.**

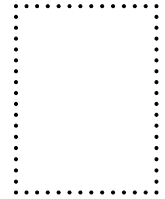


TRONFJELL FREDSUINIVERSITET . FORPROSJEKT . PLAN 4. ETASJE . MÅLSTOKK 1:400 . 20.02.2002

**Plan 3rd floor:** On this level the whole construction has roof, except from the Tower, which has one apartment, together with a anteroom with a spiral stairway leading up to the very tower room above. Indentation: **Plan 4th floor:** Here is the very tower room with big windows in all directions. It will be used for various purposes and covers 100 square metres. **Pre-project 20.02.2002. Knud Larsen.**

# The Mt.Tron Mail

# A



Retour address:

Mt.Tron University of Peace Foundation  
Shantibu  
2560 Alvdal  
NORWAY

To:

## The Mt.Tron Mail

**The Mt.Tron Mail** - The newsletter for those interested in the establishing of the Mt.Tron University of Peace

**Publisher:** Mt.Tron University of Peace Foundation  
**Editor:** Bjørn Pettersen  
(Chairman of the Foundation)  
**Issues:** Quarterly 4 times a year  
**Languages:** Norwegian and English  
**Prices:** Subscription of support NOK 300,-/year  
Single copies NOK 30,-/piece

**Address:** "Shantibu", 2560 Alvdal, Norway  
**Telephone + Fax:** +47 62 48 78 56  
**E-mail: (temporary)** bjoepett@c2i.net  
**WEB-pages:** (temporarily down)  
**Postal giro account:** 0809 2227007  
**Bank account:** 1895.26.50935  
Sparebanken Hedmark  
**SWIFT address:** SHEDNO22ALV

## News from Mt.Tron

### Pre-project

With this issue of The Mt.Tron Mail, the pre-project of professor civil architect Knud Larsen of 20.02.2002, for the Mt.Tron University of Peace, together with the work model from August 2001, has finally been presented for The Mt.Tron Mail's readers in its entirety. For those who possibly miss *Plan Ground Floor*, it was reproduced in a bit larger format in the September issue last year (3/2001). This floor was drawn in an early



*Professor civil architect Knud Larsen is video filming the view from the building site of current interest for the University of Peace, on the Peace Plateau on Mt.Tron in Alvdal, Norway. Here with a view towards East.*

*Photo: BP, 04.08.2002.*

stage in August 2001, but was not essentially changed in February 2002.

### Progress

Because of some unforeseen and difficult circumstances during spring and summer, the Foundation's work with the presentation of the project had to be temporarily postponed. It will therefore now be made a vigorous pull forward to finish this before the end of the year. There are still several subscribers who haven't paid the yearly subscription