



The Mt. Tron Mail

March 2002

Mt. Tron University of Peace Foundation

No. 1, Volume 5

Peace on the basis of human values



*The peak of Mt. Tron as seen from the South.
Aerial photo: BP. Pilot: Svein Ellingvåg. 25th March 2000.*

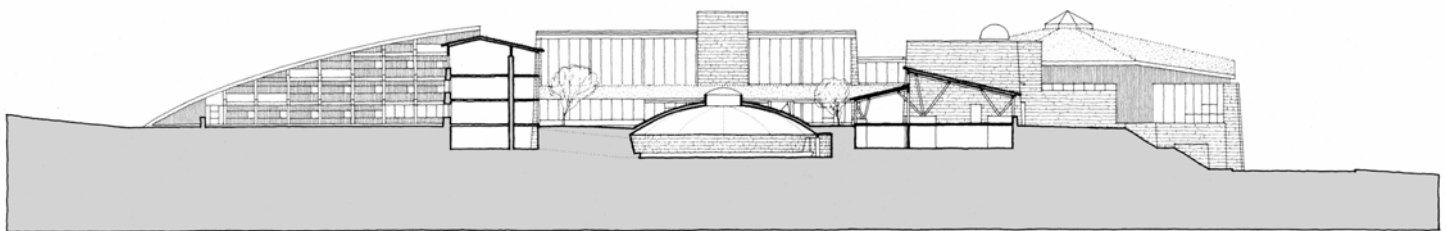
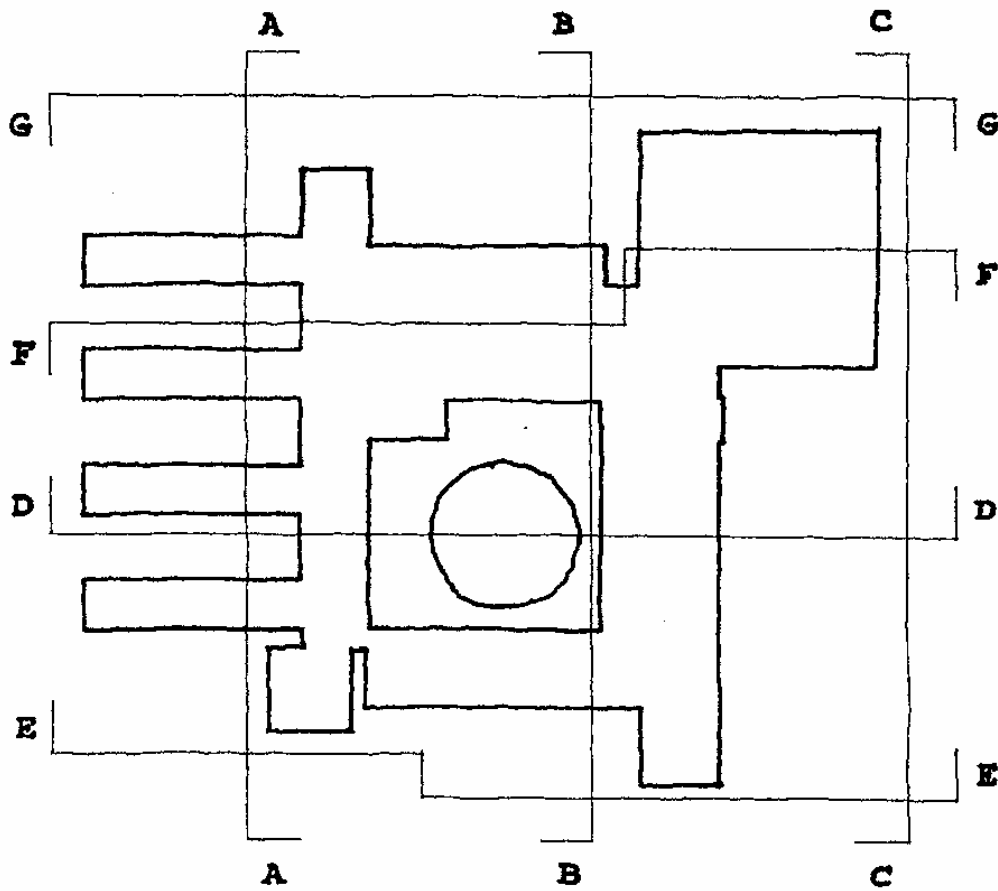
The human being as the centre

In our Western culture economy stands at the centre and not the human being. In spite of the fact that many political parties are fond of proclaiming that in their party programme the human being stands at the centre, all the political issues are always overruled by the budget. We have got everything — food, clothes, shelter, education, health and security — but little humanity and priority to purely human values. Not to mention human knowledge — we also don't even possess an exact science of man. All this and other things make us live in a humanly sick society where illnesses due to life style and human relationship problems flourish; as suicide, nervous sufferings, psychological problems, dread, stress, 'burn-out', cardiac diseases, and cancer, to mention some. Such a society has no future. The human being can not be replaced by machines.

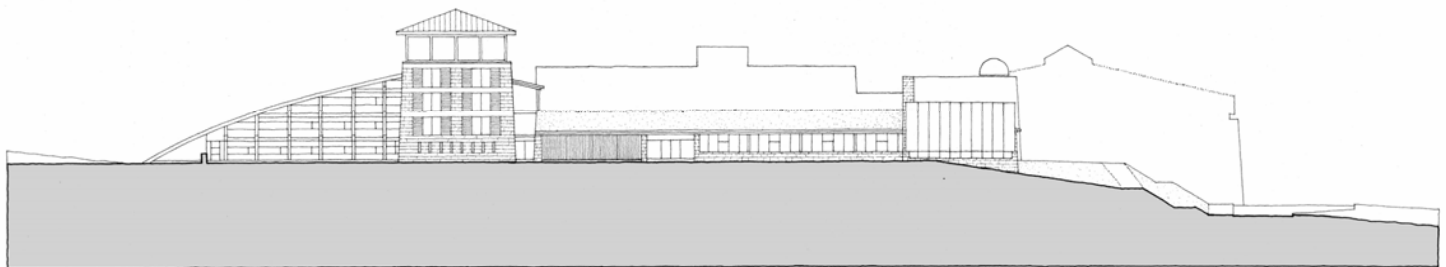
On the other hand this culture has in fact produced certain purely human values which to the highest degree is worth building on. They only have to be given the highest priority in society. Democracy and ideals of equality have made the basis of the UN's universal Human Rights Declaration, which is the most important — and only — common pact of humanity. Another thing the Western culture has produced — through inter-continental means of transportation and boundless media transfers — is 'The Global Village'. Such a platform will make the ideal foundation for a universal system of government, based on a further development of the UN's organization and human rights declaration.

The University of Peace aims at giving value and knowledge to the individual, and to work for a society which actually places the human being at the centre.

(3) New drawings and a new model to...



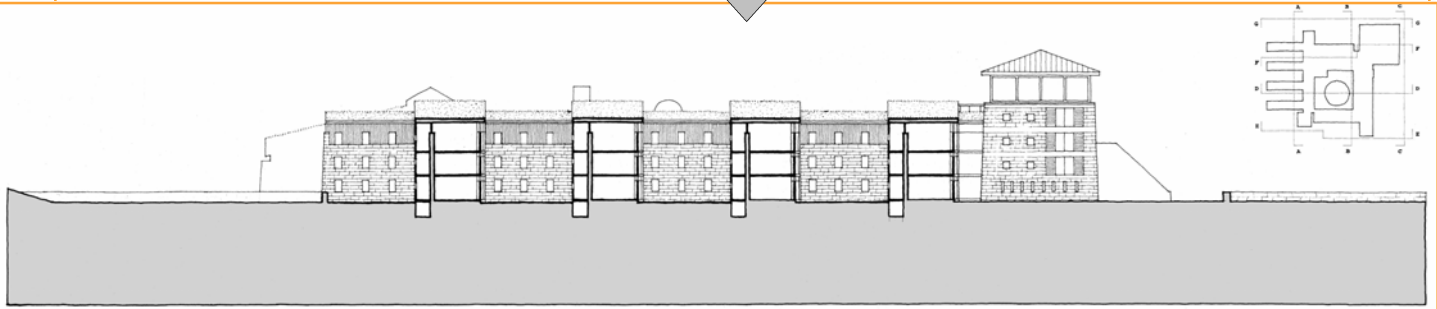
D-D TVERSNIIT VEST-ØST



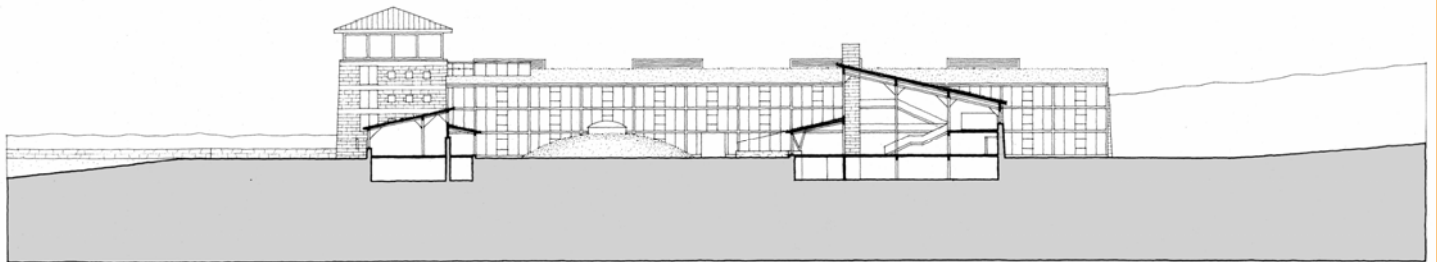
E-E FASADE MOT SYD

Above is a simplified sketch of the whole building complex, showing the frontages and incisions from A to G. Below is seen (above) the D-D incision West-East, and (below) the E-E frontage towards South. From: Mt.Tron University of Peace . Preliminary project . 20.02.2002 . Professor civil architect Knud Larsen.

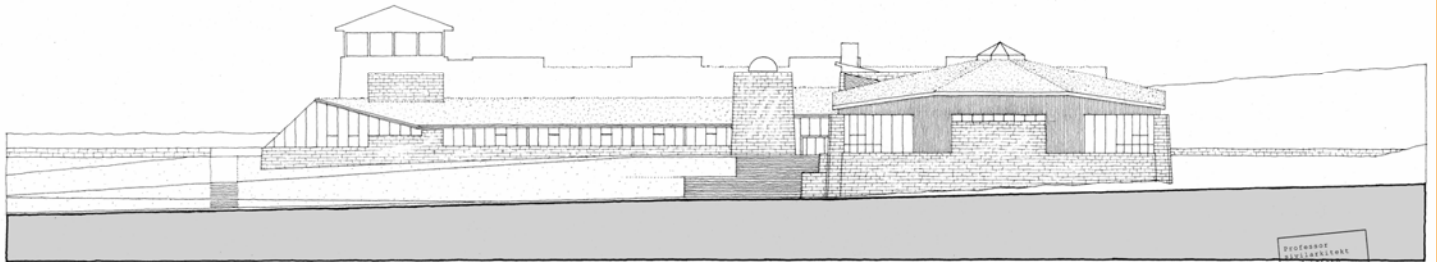
The Mt.Tron University of Peace



A-A FASADE MOT VEST/SNITT



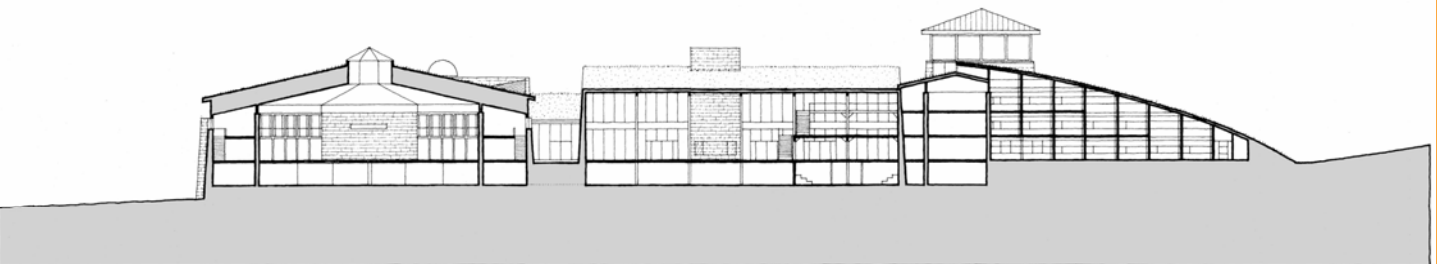
B-B TVERSNITT SYD-NORD



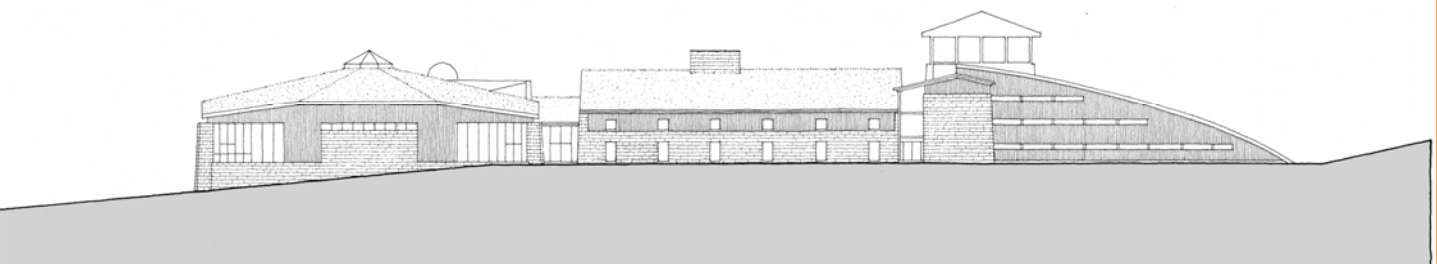
C-C FASADE MOT ØST

TRONFJELL FREDSUNIVERSITET . FORPROSJEKT . FASADER/SNITT A-B-C . MÅLESTOKK 1:400 . 20.02.2002

PROFESOR
ARKITEKT
KNUD LARSEN
1100 OSLO
TELEFON 22 41 18 37
FAX 22 62 24 91



F-F SNITT ØST-VEST



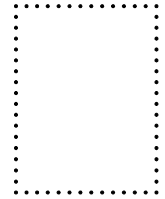
G-G FASADE MOT NORD

In the above picture is seen (above) the A-A frontage towards West with incision; (in the middle) the B-B incision South-North; and (below) the C-C frontage towards East.

*In the below picture (above) the F-F incision East-West, and (below) the G-G frontage towards North.
From: Mt.Tron University of Peace . Preliminary project . 20.02.2002 . Professor civil architect Knud Larsen.*

The Mt.Tron Mail

A



Retour address:

Mt.Tron University of Peace Foundation
Shantibu
2560 Alvdal
NORWAY

To:

The Mt.Tron Mail

The Mt.Tron Mail - The newsletter for those interested in the establishing of the Mt.Tron University of Peace

Publisher: Mt.Tron University of Peace Foundation
Editor: Bjørn Pettersen
(Chairman of the Foundation)
Issues: Quarterly 4 times a year
Languages: Norwegian and English
Prices: Subscription of support NOK 300,-/year
Single copies NOK 30,-/piece

Address: "Shantibu", 2560 Alvdal, Norway
Telephone + Fax: +47 62 48 78 56
E-mail: fredsuni@online.no
WEB-pages: <http://home.sol.no/~bjpetter>
Postal giro account: 0809 2227007
Bank account: 1895.26.50935
Sparebanken Hedmark
SWIFT address: SHEDNO22ALV

News from Mt.Tron

The drawings of the preliminary project of the University of Peace, have now been concluded by the civil architect and professor Knud Larsen. He started in August last year with the making of a work model of the whole construction. After that he had to attend to his students at the Norwegian Institute of Science and Technology at Trondheim. In January/February this year he resumed the work and concluded it on the 20th February. In all there are 14 different drawings, including site plan, floor plans, frontages and incisions. Compared to



*Mt.Tron as seen from the West, with the white peak in the background. To the right is seen the 'Peace Plateau'.
Aerial photo: BP. Pilot: Svein Ellingvåg. 25th March 2000.*

the model and the plan for the ground floor which were made in August, there have now been made certain alterations, particularly with the tower and the Eastern entrance, where the star observatory has been moved from the former to the latter. The tower has also become higher. Moreover a greenhouse has been added to the kitchen area. Still there may be changes when the different parts and aspects of the project will be elucidated, but the main features will probably remain as shown.