



The Mt. Tron Mail

July 2012 * Mt.Tron University of Peace Foundation * No. 2 Vol. 15



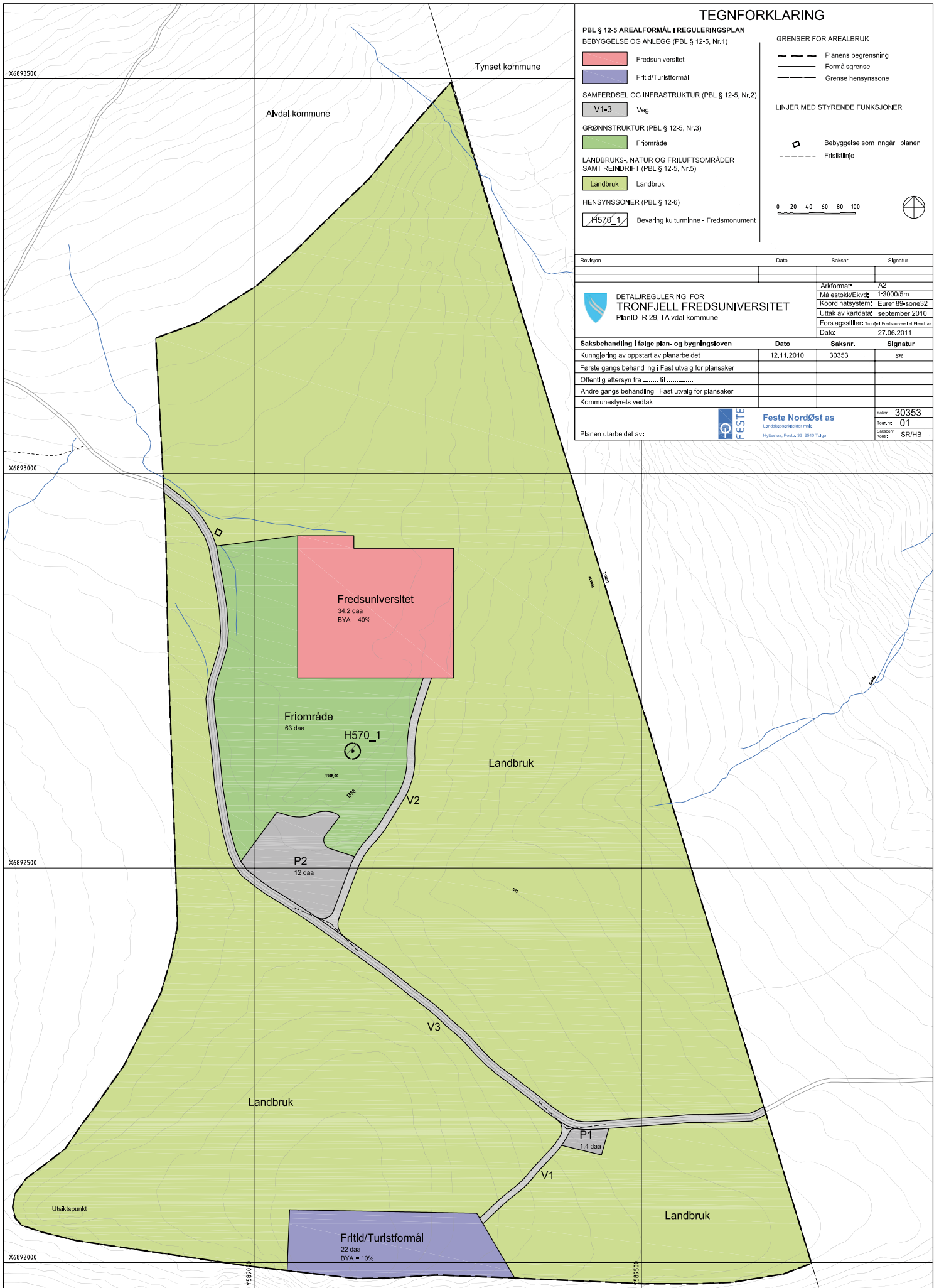
Mt. Tron seen from the centre of Alvdal, at the confluence of the rivers Glomma and Folla May 26th 2012, at 09:46 hrs. Photo: BP

The Regulation Plan for the Mt. Tron University of Peace finally sanctioned!

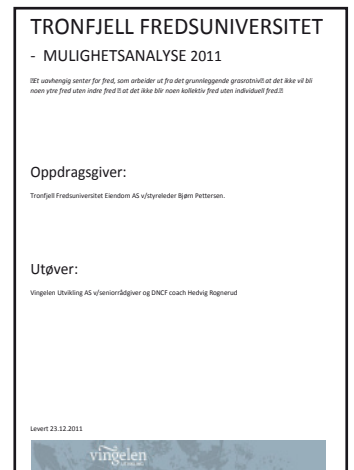
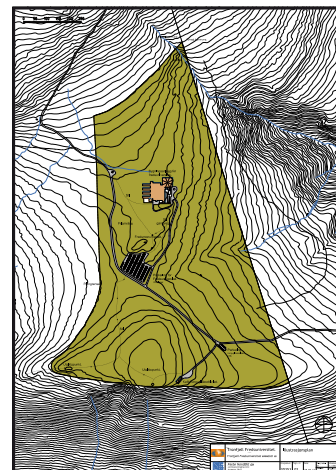
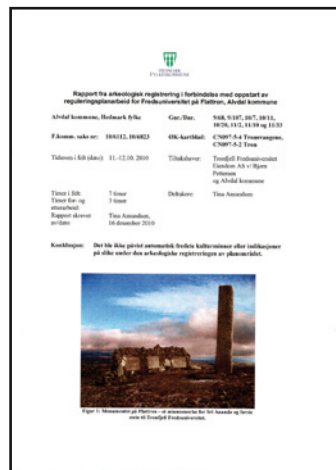
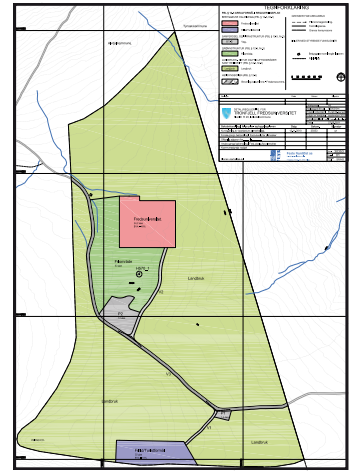
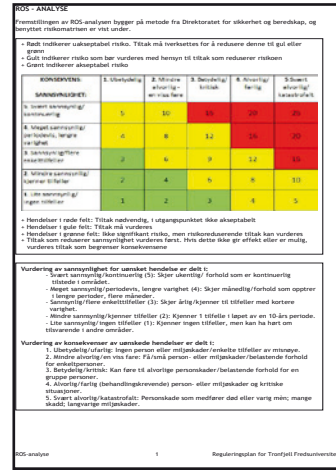
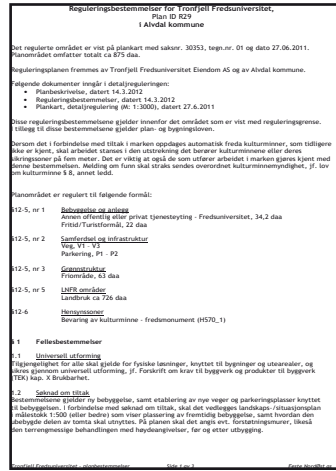
“Detailed Regulation for Mt. Tron University of Peace” was unanimously passed and finally sanctioned by the local council of Alvdal on April 26th. A great milestone of the project has been reached! Simultaneously we are now starting Phase 2 in which we are reaching out actively to make our plans known and to collect the means for building the project.

Read more about the regulation plan and Phase 2 of the project on the next pages!

Detailed Regulation for Mt.Tron University of Peace



The regulation plan's various documents

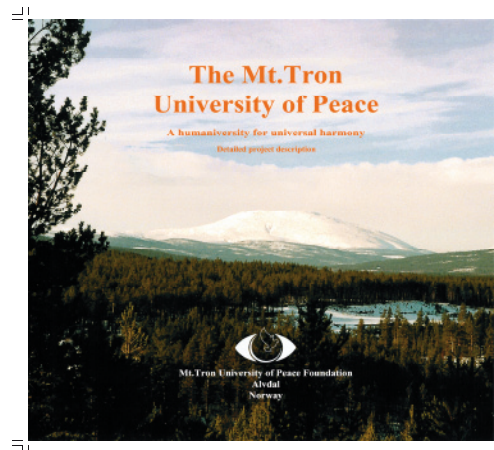


The various documents which all together have decided the resolution of the regulation plan. Above from left: Plan Description, Regulation Provisions, ROS Analysis, Plan Map (main map).

Below from left: Botanical Registration Report, Archaeological Registration Report, Illustration Plan, Possibility Analysis.

The "Plan Map" is the actual regulation plan with Plan ID R 29 in the municipality of Alvdal: **Detailed Regulation for Mt.Tron University of Peace**. To this belong the "Plan Description" where the Regulation Provisions, ROS Analysis (risk- and vulnerability analysis) and the Illustration Plan are found. All these documents were prepared by the landscape architect firm of Feste North-East Inc. at Tolga. Prior to these documents a botanical registration was done by biologist Tor Sørdal Bue during summer 2010: **Botanical registrations at Flattron, Alvdal municipality, Hedmark**. The report concludes that the found species and genera are common to the middle alpine region, and that none of the species are Red List Species. Botanical registration and ROS analysis were prerequisites for drawing up the regulation plan, as determined by the Alvdal Land Use Plan. Employer for the botanical registrations was thus the Mt.Tron University of Peace Estate Inc. Also, archaeological registrations were executed, directed by Hedmark County Municipality, which is standard procedure in all such development cases. Archaeologist Tina Amundsen performed the registrations in mid- October 2010: **Report from archaeological registration in connection with the starting of regulation plan work for the University of Peace at Flattron, Alvdal municipality**. The report concludes that no automatically protected cultural monuments or indications of such were found during the archaeological registration of the site.

In the aftermath of the actual regulation work a possibility analysis was carried out by Vingelen Development Inc. by senior advisor and DDCF coach Hedvig Rognerud: **Mt.Tron University of Peace - Possibility Analysis 2011**. Here also the employer was Mt.Tron University of Peace Estate Inc. The possibility analysis was attached to the regulation plan in January 2012. Another attachment was the Mt.Tron University of Peace Foundation's own Pre-Project of 03.03.2003 (revised edition in 2011): **The Mt.Tron University of Peace. A humaniversity for universal harmony. Detailed project description**. Several of these documents are now laid out on our home pages: <http://www.tronuni.org/content/project>



The Foundation's Pre-Project of 03.03.2003 with detailed project description. Now laid out on our home pages on the Internet in the pdf format.

The project's Phase 2 starts now



Mt. Tron seen from the West side of Alvdal, June 8th 2012, at 07:54 hrs. Photo: BP.

At the turn of the year 2010-2011 the project was divided into four phases. Phase 1 has mainly consisted of the regulation plan and possibility analysis, together with preliminary steps for land acquisition on Flattron (the "Peace Plateau"). The latter has started, but as it is a complicated affair it is expected to take some time. We are therefore now starting Phase 2 of the project, which mainly consists of fundraising, detailed planning of the construction and determining the operation programme. Phase 3 will consist of construction work and building operations, and Phase 4 will be the operation of the campus. Operation will mainly be based on the activity of courses, seminars/workshops, retreats, conferences, tourism, rental and sales of literature, post cards and a variety of other items.

Up to the present day the project has deliberately kept a relatively low profile, but now it is necessary to make the project sufficiently known locally, regionally, nationally and globally. Included in the project's Phase 2 is to establish an office in the centre of Alvdal with one person working in a 50 % post to begin with. The office will make the project visible locally and be an exponent of communication on all levels. It will provide information and do networking, and administer a broadly based campaign for collecting the means to support the building project. The office will house an exhibition about the project and a barometer displaying the total collected, and be open to the public so that visitors may obtain information about the project's development.

The Mt. Tron Mail - the newsletter for those interested in the establishing of the Mt. Tron University of Peace

Publisher: Mt. Tron University of Peace Foundation
Editor: Bjørn Pettersen
(Chairman of the Foundation)
Issues: Quarterly (4 times a year)
Languages: Norwegian and English
Prices: Subscription of support NOK 350,-/year
US\$ 50,-/year € 44,-/year

Address: "Shantibu", 2560 Alvdal, Norway
Telephone: +47 62 11 36 91
E-mail: shanti@tronuni.org
Internet: www.tronuni.org
Organization No: 990 106 118
IBAN: NO94 1895 2650 935
BIC-address: SHEDNO22
Bank name: Sparebanken Hedmark